

FREEHOLD



House - Townhouse

EDGBASTON CLOSE, THURCASTON

PARK, LEICESTER, LE4 2HS

£215,000

FEATURES

- Semi Detached House
- Kitchen
- Lounge / Diner
- Three Bedrooms
- Entrance Hall
- Cloakroom
- Conservatory
- Rear Garden



SETHS

3 Bedroom House - Townhouse located in Leicester

Well presented End Town House situated in the Thurstaston area, the property is situated closely to local schools and amenities.

The accommodation comprises, entrance hall, lounge/diner, kitchen, cloakroom, conservatory, THREE BEDROOMS and a family bathroom. The property benefits from double glazing, gas central heating, allocated parking to the front with space for one car and a rear garden.

Viewing is by appointment only and is offered with NO CHAIN.

Call us on

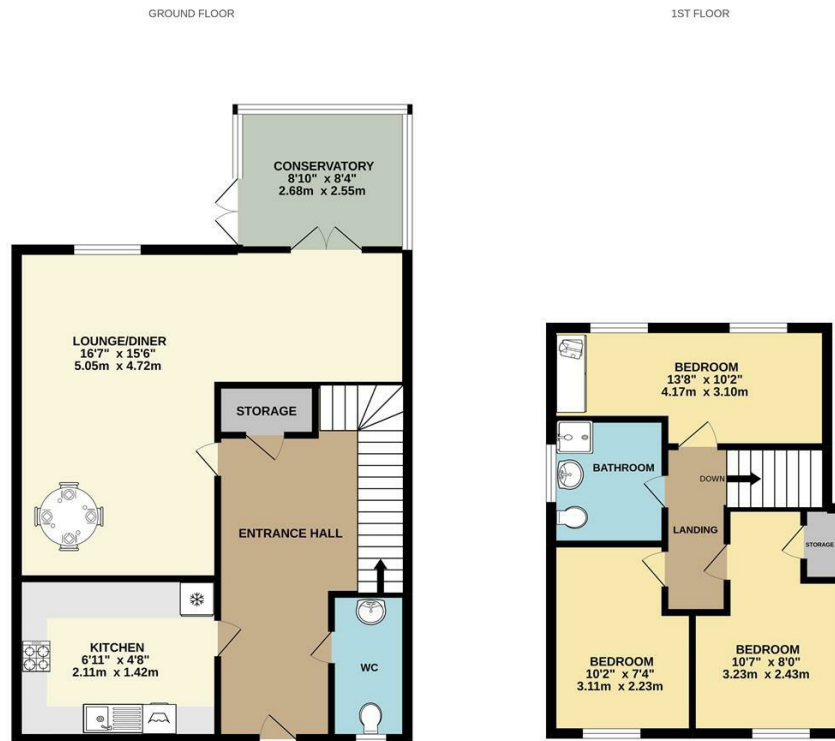
0116 266 9977

sales@seths.co.uk

www.seths.co.uk

Council Tax Band

B



Whilst every attempt has been made to ensure the accuracy of the floorplan contained here, measurements of doors, windows, rooms and any other items are approximate and no responsibility is taken for any error, omission or mis-statement. The plan is for illustrative purposes only and should be used as such by any prospective purchaser. The services, systems and appliances shown have not been tested and no guarantee is given as to their operability or efficiency can be given.
Made with Metropix ©2022

Energy Efficiency Rating		Current	Potential
<i>Very energy efficient - lower running costs</i>			
(92 plus)	A		
(81-91)	B		
(69-80)	C		
(55-68)	D		
(39-54)	E		
(21-38)	F		
(1-20)	G		
<i>Not energy efficient - higher running costs</i>			
England & Wales		EU Directive 2002/91/EC	

Agents Note: Whilst every care has been taken to prepare these particulars, they are for guidance purposes only. All measurements are approximate and are for general guidance purposes only and whilst every care has been taken to ensure their accuracy, they should not be relied upon and potential buyers are advised to recheck the measurements.

